

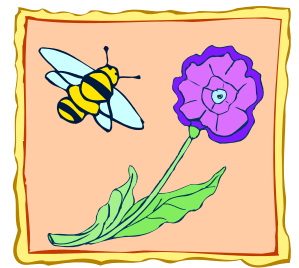


The School District of Palm Beach County, Florida

[www.palmbeachschools.org/sfs](http://www.palmbeachschools.org/sfs)

# Elementary Lunch Menu

## April 2013



Parents are encouraged to prepay online for students meals. The link is provided on our website.

Monday

Tuesday

Wednesday

Thursday

Friday

 <p>To find nutrition facts about school meals, visit <b>Health-e Living!</b> The link is provided on our website!</p>	<p>2 Traditional or Fiesta Beefaroni w/Roll Hot Dog PB&amp;J Sandwich Platter Broccoli &amp; Cauliflower Garden Salad</p>	<p>3 Oven Roast Chicken w/Brown Rice Macaroni &amp; Cheese w/Roll Peanut Butter Platter Black Beans</p> 	<p>4 Meatloaf w/Roll Gravy Stuffed Crust Pizza PB &amp;J Sandwich Platter Mashed Potatoes</p>	<p>5 <b>"Fresh From the Farm"</b> Chicken Parmesan w/Pasta Shells Cheeseburger Hamburger Muffin Platter <b>Roasted Zucchini and Yellow Squash</b> <b>Mini Sweet Peppers</b></p>
<p>8 Beef Nachos w/Tortilla Chips Mini Cheese Pizza Bagels Muffin Platter Sliced Sweet Plantains</p>	<p>9 Spaghetti &amp; Meat Sauce Corndog PB&amp;J Sandwich Platter Steamed Broccoli Florets</p>	<p>10 BBQ Chicken w/Cornbread Grilled Cheese Sandwich Chef Garden Salad Sweet Potato Bake Cole Slaw</p>	<p>11 Popcorn Chicken w/Roll Macaroni &amp; Cheese w/Roll PB&amp;J Sandwich Platter Baked Beans</p>	<p>12 <b>"Fresh From the Farm"</b> Nacho Fish Taco Hot Ham &amp; Cheese Sandwich Muffin Platter <b>Corn-on-the-Cob</b></p>
<p>15 <b>FCAT TESTING</b> Chicken Nuggets w/Roll Grilled Cheese Sandwich Muffin Platter Steamed Broccoli Florets</p>	<p>16 <b>FCAT TESTING</b> Hot Ham &amp; Cheese Sandwich Hotdog PB&amp;J Sandwich Platter Sweet Potato Bites</p>	<p>17 <b>FCAT TESTING</b> Chicken Tenders w/Roll Stuffed Crust Pizza Peanut Butter Platter Baked Beans</p>	<p>18 <b>FCAT TESTING</b> Mini Cheeseburger Sliders Cheesy Burrito PB&amp;J Sandwich Platter Sliced Sweet Plantains</p>	<p>19 <b>"Fresh From the Farm"</b> Teriyaki Chicken w/Rice Fiesta Pizza Muffin Platter <b>Green Beans</b> <b>Mini Sweet Peppers</b></p>
<p>22 <b>FCAT TESTING</b> Pizza Cheesy Burrito Muffin Platter Sweet Potato Bites</p>	<p>23 Penne Pasta &amp; Meat Sauce Corndog Petit Parfait Combo Steamed Broccoli Florets</p>	<p>24 BBQ Chicken w/Sweet Potato Muffin Italian Grilled Cheese Mini-Mandarin Chicken Salad Baked Beans</p>	<p>25 Chicken Tenders w/Roll Macaroni &amp; Cheese w/Roll PB&amp;J Sandwich Platter Peas &amp; Carrots</p>	<p>26 <b>"Fresh From the Farm"</b> Soft Taco Hot Ham &amp; Cheese Sandwich Muffin Platter <b>Corn-on-the-Cob</b></p>
<p>All students enrolled in Palm Beach County schools are offered a Free Breakfast every day. Visit our website for more information <a href="http://www.palmbeachschools.org/sfs">www.palmbeachschools.org/sfs</a></p>				
<p>29 Chicken Nuggets w/Roll Cheesy Burrito Muffin Platter Potato Sticks</p>	<p>30 Traditional or Fiesta Beefaroni w/Roll Hot Dog PB&amp;J Sandwich Platter Broccoli &amp; Cauliflower Garden Salad</p>	<p><b>Fresh From Florida</b>  <b>April 2 – 5 -- Strawberries, Grape Tomatoes, Mini Sweet Peppers and Roasted Zucchini and Yellow Squash</b>  <b>April 8 – 12 – Grape Tomatoes, Navel Oranges, and Corn-on-the-Cob</b>  <b>April 15 – 19 – Strawberries, Grape Tomatoes, Mini Sweet Peppers, and Fresh Green Beans</b>  <b>April 22 – 26 – Grape Tomatoes, Navel Oranges, and Corn-on-the-Cob</b></p>		

The OrganWise Guys Foods of the Month for April are Nuts and Fresh Beans. Visit our website for more information.



GRAINS • MEATS • FRUITS (fresh or cupped fruit, or 100% fruit juice) • VEGETABLES • MILK

At lunch, for a complete meal, students may select three to five of the above food groups to complete their meal. At least one of these choices MUST be from the fruit or vegetable group.

\*Menu is subject to changes.

In accordance with Federal Law and U.S. Department of Agriculture policy, this institution is prohibited from discriminating on the basis of race, color, national origin, sex, age, or disability. To file a complaint of discrimination, write USDA, Director, Office of Adjudication, 1400 Independence Avenue, SW, Washington, D.C. 20250-9410 or call toll free (866) 632-9992 (Voice). Individuals who are hearing impaired or have speech disabilities may contact USDA through the Federal Relay Service at (800) 877-8339; or (800) 845-6136 (Spanish). USDA is an equal opportunity provider and employer.